



# Certified Pre-Owned Inspection Report



Completed On  
**09-16-2015**

RV Inspected  
**2009 Tiffin Phaeton 42QRH**  
**VIN: XXXXXXXXXXXXX0072**

Inspected By

**RV INSPECTION  
CONNECTION**  
[www.rvinspection.com](http://www.rvinspection.com)

Presented By

**DEALER LOGO**

**DEALER NAME**  
**DEALER ADDRESS**  
**CITY, STATE, ZIP**  
**(123) 456-7890**

Inspection Completed by an  
**NRVIA** Certified  
RV Inspector



Motor Home Inspection Report

# Summary of Inspection

## Life Safety Issue

---

1. Smoke Detector appears to be over 7 years old - Strongly recommend replacmenet by qualified service personnel
2. Upon removing the Tire Monitor sending unit to check PSI, there was no valve core and the tire lost pressure.

## Major Issue

---

1. Rear Cap: Sealant on the seam appears to be cracked.
2. The Front Air Conditioner does not appear to be producing cold air.

## Minor Issue

---

1. Windshield: it appears there may be a problem with the wiper mechanism on the passenger side.
2. Curb Side Rear Slide out Topper: there appears to be a tear in the fabric at both ends.
3. Water Pump would not operate.
4. Ceiling Vent in kitchen area works but the thermocouple appears to not be secured and interfering with the fan operation.
5. The molding on the counter in the bedroom appears to be loose.
6. Cabinet door located next to the refrigerator appeared to have a loose glass and has some tape on it.

## Comment or Notice

---

1. Curb Side - Side Wall Cargo Doors: There appears to be some scratches on the next to the last cargo door.
2. Unable to verify operation of the Front TV by the door. Due to this, unable to verify DVD operated properly even though it did power up.



\*Maintaining Oil and Equipment Through Science\*

# Lubricant Analysis Report

North America: +1-877-971-7799

0	1	2	3	4
NORMAL	ABNORMAL		CRITICAL	

Overall report severity based on comments.

Account Information		Component Information		Sample Information	
Account Number: XXXXXX-0000-0000 Company Name: DEALER NAME Contact: DEALER CONTACT Address: ADDRESS, CITY, ST ZIP Phone Number: (123) 456-7890		VIN#: XXXXXXXXXXXXX0072 RV MAKE/MODL: 2009 Tiffin Phaeton Component Type: DIESEL ENGINE Manufacturer: CUMMINS Model: ISC Application: TRANSPORTATION Sump Capacity: 0 gal		Tracking Number: 14074E01259 Lab Number: H-916268 Lab Location: Houston Data Analyst: EAD Sampled: 16-Sep-2015 Received: 23-Sep-2015 Completed: 25-Sep-2015	
Filter Information		Miscellaneous Information		Product Information	
Filter Type: Missing Information Micron Rating: 0				Product Manufacturer: Missing Information Product Name: Missing Information Viscosity Grade: Missing Information	
Comments	Data indicates no abnormal findings. Resample at normal interval. Unable to recommend EXTENDING DRAIN INTERVAL on this sample due to incomplete lubricant information. Please provide LUBRICANT MANUFACTURER, PRODUCT NAME, and VISCOSITY GRADE (if applicable). Please provide missing lubricant information. Manufacturer, product name, and viscosity grade are needed to properly evaluate data. Unit and/or lubricant TIME missing.				

Sample #	Wear Metals (ppm)										Contaminant Metals (ppm)			Multi-Source Metals (ppm)					Additive Metals (ppm)					
	Iron	Chromium	Nickel	Aluminum	Copper	Lead	Tin	Cadmium	Silver	Vanadium	Silicon	Sodium	Potassium	Titanium	Molybdenum	Antimony	Manganese	Lithium	Boron	Magnesium	Calcium	Barium	Phosphorous	Zinc
1	9	0	0	3	0	0	0	0	0	0	1	0	4	0	34	0	0	0	0	771	1098	0	935	1136

Sample #	Sample Information								Contaminants			Fluid Properties					
	Date Sampled	Date Received	Lube Time	Unit Time	Lube Change	Lube Added	Filter Change	Fuel Dilution	Soot	Water	Viscosity 40°C	Viscosity 100°C	Acid Number	Base Number	Oxidation	Nitration	
			mi	mi	Lube Change	gal	Filter Change	% Vol	% Vol	% Vol	cSt	cSt	mg KOH/g	mg KOH/g	abs/cm	abs/0.1 mm	
1	N/A	23-Sep-2015	0	0	Unk	0	Unk	<1 - Estimate	<.1	<.1 - FTIR		14.2		7.07	10	7	

Sample #	Particle Count (particles/mL)										Additional Testing		
	ISO Code	Based On	> 4 µm	> 6 µm	> 10 µm	> 14 µm	> 21 µm	> 38 µm	> 70 µm	> 100 µm	Test Metho		
1	//	4/6/14											

Comments are advisory only and are based on the assumption that the sample and data submitted are valid. Missing fluid or component information limits the evaluation. No warranty is expressed or implied.

Historical Comments

# Report Table of Contents

**Section 1 - Vehicle Data Info**

**Section 2 - Exterior - Roof**

**Section 3 - Exterior - Sidewalls**

**Section 4 - Slide Outs**

**Section 5 - Exterior - Chassis - Undercarriage**

**Section 6 - Exterior - Other**

**Section 7 - Electrical - 120 Volt AC & 12 Volt DC**

**Section 8 - Water Systems**

**Section 9 - Propane / LP / CO / Smoke**

**Section 10 - Appliances**

**Section 11 - Interior Conditions and Appearance**

**Section 12 - Furniture Condition**

# Motor Home Inspection Report

## Section 1 - Vehicle Data Info

### Weight Labels and Data Plates

VIN#: XXXXXXXXXXXXX0072

RVIA / Canadian Seal # :  
XXXX82399

Location of VIN# -

Dash

Driver Seat  
Area

Inside  
Cabinet

Other

Brand Name: Tiffin

Model: Phaeton - 42QRH

Mfgr. Name / Info: Tiffin

Mfgr. Date: Sept 2008

Frame Mfgr. Name: Spartan

Frame Number: 9841

Frame Mfgr. Date: 2009

Gross Vehicle Weight Rating:  
42,600

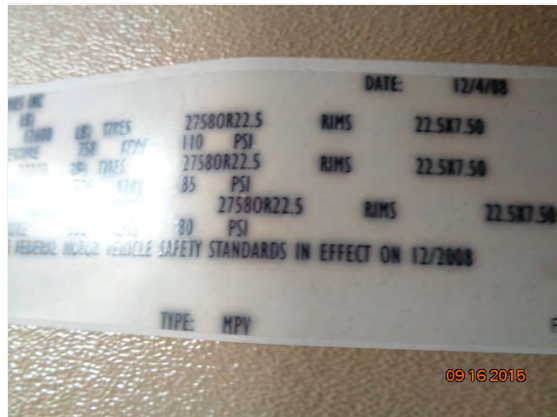
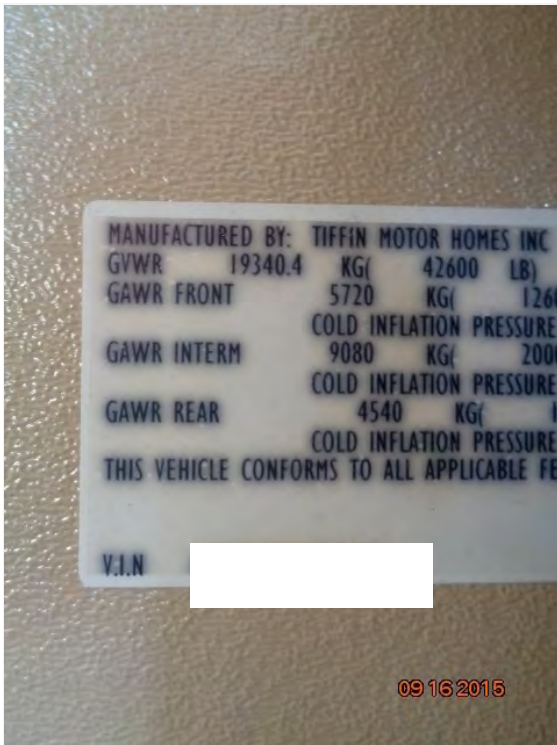
State Inspection Sticker Current: No

State:

State - License Plate: none

State Plate - Current: N/A

- VIN / Manufacturer Info / GVW



- RVIA

# Motor Home Inspection Report



- Frame Information



## Section 2 - Exterior - Roof

### Roof Overview

**Roof Overview - General Condition:** Acceptable      **Specifics (Remarks):**

**Type of Roof:** Fiberglass

- Front to rear view

## Motor Home Inspection Report



- Rear to front view



---

### Front Cap/Joints and Seals

**Front Cap / Joints & Seals - General Condition:** Acceptable

---

# Motor Home Inspection Report

## Awning Rail Trim - Curb Side

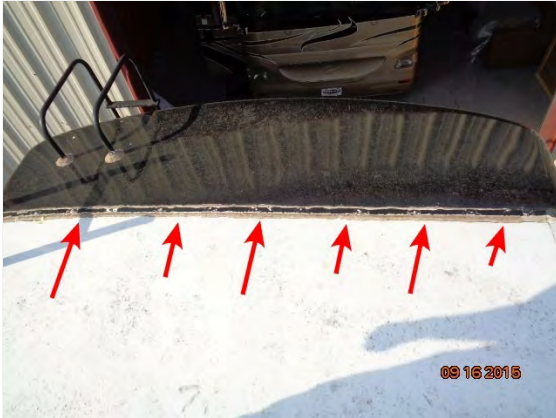
Awning Rail Trim (Curb Side) - General Condition: Acceptable

---

## Rear Cap/Joints and Seals

Rear Cap / Joints & Seals - General Condition: Fair

- Rear Cap: Sealant on the seam appears to be cracked.



## Trim Rail - Street Side

Trim Rail / Street Side - General Condition: Acceptable

---

## Roof Vents and Skylights

Vents - Manual Crank (14 in x 14 in) - General Condition: N/A

Vents - Powered (14 in x 14 in) - General Condition: Acceptable

Exterior Vent Covers - General Condition: Acceptable

Plumbing Vent Covers - General Condition: Acceptable

Roof Refrigerator Vent - General Condition: N/A

Skylights - General Condition: Acceptable

---

## Air Conditioner #1

Air Conditioner Shroud - General Condition: Acceptable

AC Exterior Coils - General Condition: Acceptable

---

## Air Conditioner #2

Air Conditioner Shroud - General Condition: Acceptable

AC Exterior Coils - General Condition: Acceptable



# Motor Home Inspection Report

## Air Conditioner #3

**Air Conditioner Shroud - General Condition:** Acceptable

**AC Exterior Coils - General Condition:** Acceptable

## Roof Accessories - Antenna, Ladder and Solar Panels

**TV Antenna:** Yes

**TV Antenna - General Condition:** Acceptable

**Satellite Antenna:** Yes

**Satellite Antenna - General Condition:** Acceptable

**Radio Antenna:** Yes

**Radio Antenna - General Condition:** Acceptable

**Solar Pannels:** No

**Solar Panels - General Condition:**

**Solar Panels - # installed:**

**Ladder - Roof Access:** Yes

**Ladder - General Condition:** Acceptable

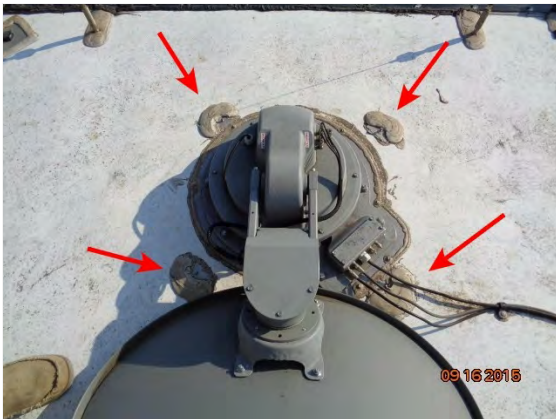
**Ladder Type:** Mounted

**Equipment been Removed:** Yes

**Air Horns:** Operational

**Other (List and Evaluate):** CB Radio Antennas

- It appears that the satellite may have been replaced.



## Section 3 - Exterior - Sidewalls

### Front Windshield and Wall

**Front Cap / Wall - General Condition:** Acceptable

**Paint and Decals - General Condition:** Acceptable

**Window in Front Cap / Wall:** None

**Window Front Cap / Wall - General Condition:**

**Windshield in Front Cap:** Glass With Frame

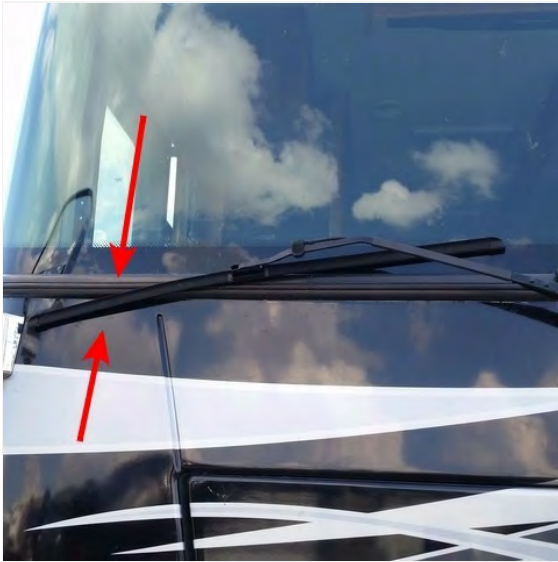
**Windshield - General Condition:** Acceptable

**Cargo Door(s):** None

**Cargo Door(s) - General Condition:**

- Windshield: it appears there may be a problem with the wiper mechanism on the passenger side.

# Motor Home Inspection Report



---

## Curb Side - Side Wall

**Side Wall - General Condition:** Acceptable

**Paint and Decals - General Condition:** Acceptable

**Wall Surface:** Full Body Paint

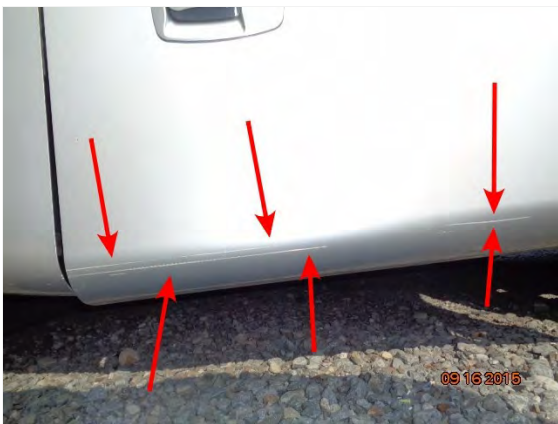
**Window(s) Wall:** Glass - With Frame

**Window(s) - General Condition:** Acceptable

**Cargo Door(s):** Doors with Keyed Locks

**Door(s) - General Condition:** Fair

- Curb Side - Side Wall Cargo Doors: There appears to be some scratches on the next to the last cargo door.



---

## Entrance Door #1

**Type of Door:** Metal Sheet

**Entrance Door - General Condition:** Acceptable

**Keyless Entry Door Lock System:** No

**Functional:**

**Keyed Door Lock/Deadbolt:** Yes

**Functional:** Yes

---

## Rear Cap/Wall

# Motor Home Inspection Report

**Rear Cap/Wall - General Condition:**  
Acceptable

**Paint and Decals - General Condition:** Acceptable

**Window in Rear Cap/Wall:** None

**Window - General Condition:**

**Cargo Door(s):** None

**Cargo Door(s) - General Condition:**

---

## Street Side - Side Wall

**Side Wall - General Condition:** Acceptable

**Paint and Decals - General Condition:** Acceptable

**Window(s) Wall:** Glass - With Frame

**Window(s) - General Condition:** Acceptable

**Cargo Door(s):** Doors with Keyed Locks

**Door(s) - General Condition:** Acceptable

---

## Main Awning #1

**Condition of Frame and Latching  
Mechanism:** Acceptable

**Main Awning Fabric - General Condition:** Acceptable

---

## Door Awning

**Condition of Frame and Latching  
Mechanism:** Acceptable

**Main Awning Fabric - General Condition:** Acceptable

---

## Window Awning #1

**Frame & Latching Mechanism - General Condition:** Acceptable

**Awning Fabric - General Condition:** Acceptable

- Curb side rear.

---

## Window Awning #2

**Frame & Latching Mechanism - General Condition:** Acceptable

**Awning Fabric - General Condition:** Acceptable

- Street side front.

---

## Slide Out Topper Awning #1

**Frame & Latching Mechanism - General Condition:** Acceptable

**Awning Fabric - General Condition:** Acceptable

- Curb Side Front Slide out topper view from the roof.

# Motor Home Inspection Report



## Slide Out Topper Awning #2

**Frame & Latching Mechanism - General Condition:** Acceptable

**Awning Fabric - General Condition:** Fair

- Curb Side Rear Slide out Topper: there appears to be a tear in the fabric at both ends.



## Slide Out Topper Awning #3

**Frame & Latching Mechanism - General Condition:** Acceptable

**Awning Fabric - General Condition:** Acceptable

- Street Side Rear Slide out topper view from the roof.

# Motor Home Inspection Report



---

## Slide Out Topper Awning #4

**Frame & Latching Mechanism - General Condition:** Acceptable

**Awning Fabric - General Condition:** Acceptable

- Street Side Front Slide out topper view from the roof.



---

## Section 4 - Slide Outs

### Slide Outs - Curb Side Front

**Slide Out Roof Type:** Metal

**Slide Out Roof - General Condition:** Acceptable

**Slide Rail Gear Rack / System - General Condition:** Acceptable

**Slide Out T-Molding Trim - General Condition:** Acceptable

**Wiring Harness Under Slide Out - General Condition:** N/A

**Sweeps and Bulb Seals - General Condition:** Acceptable

**12 Volt DC Controls & Switches - General Condition:** Acceptable

---

### Slide Outs - Curb Side Rear

# Motor Home Inspection Report

**Slide Out Roof Type:** Metal

**Slide Out Roof - General Condition:** Acceptable

**Slide Rail Gear Rack / System - General Condition:** Acceptable

**Slide Out T-Molding Trim - General Condition:** Acceptable

**Wiring Harness Under Slide Out - General Condition:** N/A

**Sweeps and Bulb Seals - General Condition:** Acceptable

**12 Volt DC Controls & Switches - General Condition:** Acceptable

## Slide Outs - Street Side Rear

**Slide Out Roof Type:** Metal

**Slide Out Roof - General Condition:** Acceptable

**Slide Rail Gear Rack / System - General Condition:** Acceptable

**Slide Out T-Molding Trim - General Condition:** Acceptable

**Wiring Harness Under Slide Out - General Condition:** N/A

**Sweeps and Bulb Seals - General Condition:** Acceptable

**12 Volt DC Controls & Switches - General Condition:** Acceptable

## Slide Outs - Street Side Front

**Slide Out Roof Type:** Metal

**Slide Out Roof - General Condition:** Acceptable

**Slide Rail Gear Rack / System - General Condition:** Acceptable

**Slide Out T-Molding Trim - General Condition:** Acceptable

**Wiring Harness Under Slide Out - General Condition:** Acceptable

**Sweeps and Bulb Seals - General Condition:** Acceptable

**12 Volt DC Controls & Switches - General Condition:** Acceptable

- Street Side Front Slide: underneath view.



# Motor Home Inspection Report

## Section 5 - Exterior - Chassis - Undercarriage

### Chassis and Undercarriage Overall Condition

**Chassis & Undercarriage - General Condition:** Acceptable

**Signs of Rust:** No

**Bent or Damaged Components:** No

**Excess Wear Showing:** No

**Excessive Oil Present:** No

---

### Frame Condition

**Frame - General Condition:** Acceptable

**Bent or Damaged Components:** No

**Scraping or Drag Damage:** No

**Tire Failure Damage:** No

---

### Running Gear Overview

**Running Gear - General Condition:** Acceptable

**Number of Axles:** 3

---

### Steering Components

**Steering Components - General Condition:** Acceptable

**Hydraulic Hose Leaks:** No

**Shock Absorber - General Condition:** Acceptable

**Bent or Damaged Components:** No

---

### Curb Side Front Wheel Assembly

#### Curb Side - Front Wheel Assembly -

**Brand:** Michelin XZE

**Size:** 275 80R22.5

**DOT Date:** 0615

**Load Cap. lbs.:** 7160 single

**Load Range:** H

**Max Air PSI:** 120

**Current PSI in Tire:** 87.8

**Tread Condition:** Acceptable

- Curb Side Front Wheel

# Motor Home Inspection Report



- Upon removing the Tire Monitor sending unit to check PSI, there was no valve core and the tire lost pressure.

---

## Curb Side Drive Axle Wheel Assembly

**Curb Side - Inside Wheel:** Yes

**Brand:** Michelin XZE

**Size:** 275 80R22.5

**DOT Date:** inaccessible

**Load Cap. lbs.:** 6610 dual

**Load Range:** H

**Max Air PSI:** 120

**Current PSI in Tire:** no signal

**Tread Condition:** Acceptable

**Curb Side - Outside Wheel -**

**Brand:** Michelin XZE

**Size:** 275 80R22.5

**DOT Date:** 0615

**Load Cap. lbs.:** 6610 dual

**Load Range:** H

**Max Air PSI:** 120

**Current PSI in Tire:** 115.9

**Tread Condition:** Acceptable

- Drive Axle Curb Side Outside Wheel: DOT



- Curb side - Inside Wheel was receiving no signal from the Tire Monitor sending unit. Unable to access sending unit to verify PSI manually.

---

## Curb Side Tag Axle Wheel Assembly

**Curb Side - Tag Axle Wheel Assembly -**





# Motor Home Inspection Report

- Front Leveling Jack



---

## Engine

**Brand:** Cummins

**Model Hp:** ISC 360

**Engine Mileage:** 34,532

**Type of Engine / Location:** Rear Diesel

**Engine Compartment Cleanliness:**

**Oil Analysis Performed:** Yes

**Last Oil Change Date:** unknown

**Last Oil Changed Miles:** unknown

**Last Oil Filter Change Date:** unknown

**Last Oil Filter Change Miles:** unknown

**Last Fuel Filter Change Date:** unknown

**Last Fuel Filter Change Miles:** unknown

**Oil Leaks:** No

**Exhaust Leaks:** No

**Engine Starts:** Yes

**Oil Pressure Reading:** Good

---

## Radiator and Fan(s)

**Location of Radiator:** Rear

**Radiator - General Condition:** Acceptable

**Reservoir - General Condition:** Acceptable

**Coolant Analysis Performed:** No

**Cooling Fans Accessible:** No

**Cooling Fans Working:** Yes

**Cooling Fan Type:**

- Radiator Section

# Motor Home Inspection Report



---

## Transmission

**Brand:** Allison 3000MH

**Trans. Oil Leak:** No

**Fluid Analysis Performed:** None

**Oil Contaminated - Discolored:** No

**Fluid Level on Dipstick:** Normal

---

## Hitch Receiver

**Hitch Receiver Installed:** Yes

**Hitch Receiver - General Condition:** Acceptable

**Brand:** unknown

**Weight Rating:** unknown

**7 Pin Connector:** Yes

**7 Pin Connector - General Condition:** Acceptable

- Hitch information: partial obstruction of pertinent information.



---

## Section 6 - Exterior - Other

### Steps and Grab Handle

**Type of Step Assembly:** Power

**Number of steps:** 2

**Grab Bar / Handle Assist:** Yes

# Motor Home Inspection Report

## Chassis - 12 volt DC Electrical System

Verify the Following Items, Add Remark for any Unchecked Items -

- |  |  |
|--|--|
| <input checked="" type="checkbox"/> Front Clearance Lights         | <input checked="" type="checkbox"/> Rear Clearance Lights            |
| <input checked="" type="checkbox"/> Curb Side - Side Marker Lights | <input checked="" type="checkbox"/> Street Side - Side Marker Lights |
| <input checked="" type="checkbox"/> Left Turn and Brake Signal     | <input checked="" type="checkbox"/> Right Turn and Brake Signal      |

Back Up Lights: Yes

Flood Lights: Yes

Utility Lights: Yes

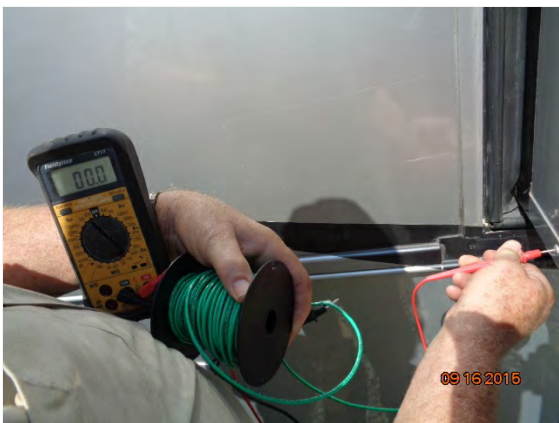
## Section 7 - Electrical - 120 Volt AC & 12 Volt DC

### Hot Skin Test

Tested for Stray AC Voltage, Verify the Following Items -

- |  |                      |
|--|----------------------|
| <input checked="" type="checkbox"/> Verified NO Voltage on Frame/Running Gear    | Voltage Recorded: No |
| <input checked="" type="checkbox"/> Verified NO Voltage on Exterior Wall Surface | Voltage Recorded: No |
| <input checked="" type="checkbox"/> Verified NO Voltage on Door Handles/Frames   | Voltage Recorded: No |
| <input checked="" type="checkbox"/> Verified NO Voltage on Window Frames/Trim    | Voltage Recorded: No |
| <input type="checkbox"/> Other   | Voltage Recorded:    |

- Hot Skin Test



## Elect. Systems - 120 Volt AC & 12 Volt DC

Power Source: 50 amp - 240/120 volt

Power Cord - General Condition: Acceptable

Visual Inspection without Power -

# Motor Home Inspection Report

**Circuit Panel Box - General Condition:**  
Acceptable

**Signs of Repair or Service:** No

**Circuit Breakers in Place:** Yes

**Wiring with Signs of Discoloration from Heat:** No

**Wiring Secure:** Yes

**All White, Black and Ground Wires Kept Separated:** Yes

**Tested Live with Power Connected and Circuit Breakers ON -**

**Polarity Test / Voltage Test - Verify the Following Items -**

**All Exterior Receptacles:**

**Receptacles in Storage Bay Areas:** Yes

**Receptacles in Bedroom:** Yes

**Receptacle Behind Refrigerator:**

**Receptacles in Kitchen:** Yes

**Receptacles in Living Room:** Yes

**Receptacles in Dining Area:** Yes

**Receptacles in Bath and Toilet Areas:** Yes

**Behind all Electronics / Appliances:** Yes

**All 120 Volt AC Light Fixtures:** Yes

- There are no exterior receptacles. The receptacles behind the refrigerator are inaccessible.

---

## GFCI Circuit Test

**Locate GFCI Protection Device(s) & Test -**

**Circuit Breaker Panel Box:** Pass

**Bathroom:** Pass

**Kitchen:** Pass

**GFCI Tripped, Locate each Affected Receptacle with Polarity Tester, Verify the Following Items, Add Remark for any Unchecked Items -**

**Bathroom Receptacles**

**Kitchen Receptacles**

**Storage Bays**

**Exterior Receptacles**

**Behind all Electronics and Appliances**

- There are no exterior receptacles.

---

## Power Converter (120 volt AC to 12 volt DC)

**Converter Test \* Voltage Should be Between 12.7 & 14.2 Volts DC -**

**Battery Voltage with 120 Volt AC Power ON:** 13.6

**Battery Voltage with 120 Volt AC Power OFF:** 12.12

**Converter Verified:** Acceptable

**Did DC Voltage Drop at Least 1/2 a Volt:** Yes

---

## Generator System

**Generator Installed:** Yes

**Brand:** Onan

**Model:** RVQD10000

**Serial #:** J080216564

**Fuel Level Above 1/4 Tank:** Yes

**Hours of Operation:** 349

**Inspected Oil Level:** Yes

**Generator Runs / Starts:** Yes

# Motor Home Inspection Report

**Radiator on Generator:** Yes

**Radiator, Reservoir and Hoses - General Condition:**

**Oil Analysis Performed:** No

**Coolant Analysis Performed:** No

- Onan Generator



- Radiator, Reservoir and Hoses are visually obstructed.

---

## Inverter System 12 volt DC to 120 AC (if applicable)

**Inverter Installed:** Yes

**Inverter - General Condition:**  
Acceptable

**Inspected Cables, Wiring and Fuses:**  
Yes

**Brand:** Xantrax

**Model:** R53000

**Serial #:** M20003561

- Inverter: mounted in the ceiling of cargo bay street side, near the middle.



---

## 12 Volt DC Electric System - (Coach Power)

**12 Volt DC Electrical System - Chassis Battery -**

# Motor Home Inspection Report

**Battery - General Condition:** Acceptable      **Overall Condition of Battery Box:** Acceptable

**Condition of Battery Cables and Terminals:** Clean

## 12 Volt DC Electrical System - Coach Power -

**Location of Deep Cycle Battery Stack:** Street side, 2nd cargo bay from front  
**Battery Box - General Condition:** Acceptable

**Batteries Matched for Size and Age:** Yes      **Indication of Battery Service:** No

**Battery Cables & Terminals - General Condition:** Acceptable      **Operational:** Yes

## Fuse Panel Box: Verify the Following -

**Fuse Panel Area - General Condition:** Acceptable      **Fuses - General Condition:** All Operation

**Fuse Connections - General Condition:** Good Condition      **Wires / Terminals Tight:** Solid Connection

## Verify the Following Items, Add Remark for any Unchecked Items -

**Compartment Lights:** Yes      **Hitch Area Light(s):** N/A

**Porch Light(s):** Yes      **Security Light(s):** Yes

**Waste Dump Light(s):** Yes

**Water / Waste Monitor Panel -**      **Reading Accuracy:** Acceptable

---

## Section 8 - Water Systems

### Plumbing - City Water Source

#### Locations Tested - Verify the Following Items -

**Outside Shower / Spray:** Acceptable      **Bathroom Faucet:** Acceptable      **Kitchen Faucet:** Acceptable  
**Shower:** Acceptable      **Toilet:** Acceptable      **Washer:** Acceptable  
**System Hold Pressure:** Yes      **Connections for City Water Operates:** Yes

---

### Fresh Water - Holding Tank and Pump System

**On-Board Water System - General Condition:** Poor

#### Components of On Board Water System -

**On-Board Water System Has:** Water Pump / Tank

**On-Board Water Pressure System Works:** No      **Pump Creates / Holds Pressure:** No

- Water Pump would not operate.

# Motor Home Inspection Report

## Waste Water Systems

**Sewer Hose / Fittings:** Acceptable

**Black Water Tank System - General Condition:** Acceptable

**Valve Operational:** Yes

**Tank, Valve or Line Leaks:**

**Drain Cap In Place:** Yes

**Drain Cap Holds Waste Water Back:** Yes

**Gray Water Tank System #1 - General Condition:** Acceptable

**Valve Operational:** Yes

**Tank, Valve or Line Leaks:** No

**Drain Cap in Place:** Yes

**Drain Cap Holds Waste Water Back:** Yes

**Gray #2 / Galley Water Tank System - General Condition:**

**Valve Operational:**

**Tank, Valve or Line Leaks:**

**Drain Cap in Place:**

**Drain Cap Holds Gray Water Back:**

- Sewer access was not available. The Black tank appeared to be empty. Upon visual inspection there didn't appear to be any leaks, but unable to confirm with water in the system.

## Section 9 - Propane / LP / CO / Smoke

### Propane / LP - ASME Tank / CO / Smoke

**Propane System Installed:** Yes

**LP System - General Condition:** Acceptable

**Tank Volume - Gallon Size:** 34

**Date of Mfgr.:** 2008

**Cover Over Regulator:** No

**Regulator Vents Downward:** Yes

**Low Pressure Hose - Output side of Regulator - General Condition:** Acceptable

**LP Shut Off Valve Installed:** Yes

**Extend-A-Stay Valve Installed:** No

**LP Leak System Test:** Pass

**Pressure DROP During Test Indicating a Leak:** No

**W/C Reading after 3-5 Minutes:** 9

**Time Leak Test Begin:** 2:45 pm

**Time Leak Test Completed:** 2:50 pm

**LP Detector Test:**

**Test - See Back for Instructions of Spraying LP:**  
Yes

**Alarm During Test:**  
Yes

**Model / Serial #:** A00087645

**Date of Mfgr.:** 09/02/14

- Propane Tank



## Motor Home Inspection Report



- LP Leak Test



- Burners in operation after LP Leak Test



---

### CO Monitor, Smoke Detector and Fire Extinguisher

**Carbon Monoxide Detector Test:** Pass

**Model / Serial # :** A00087645

**Date of Mfgr.:** 09/02/14

**Smoke Detector Test:** Fail

**Model / Serial # :** 0915

**Date of Mfgr.:** 03/13/07

# Motor Home Inspection Report

## Fire Extinguisher -

Type / Size - Minimum 10B:C Rating: Yes

Mounted within 24 inches of Exit: Yes

Gauge Indicates Charged State: Yes

- Carbon Monoxide / LP Monitor Combo



- Smoke Detector appears to be over 7 years old - Strongly recommend replacmenet by qualified service personnel



## Section 10 - Appliances

### Refrigerator

Brand: GE Profile

Model #: PF5225ISDSS

Serial #: GR041134

Type of Refrigerator: Residential Style - Compressor

All Available Heat Source(s) -

120 Volts AC

Propane

12 Volts DC

Control Panel is Located: Inside Door

Control Board: Acceptable

Operates on All Available Power/Heat Sources: Yes

Front Side of Refrigerator -

# Motor Home Inspection Report

**Front Door Panels - General Condition:**  
Acceptable

**Door(s) Latch and Secure:** Yes

**Door Seals - General Condition:**  
Acceptable

**Door Frame - General Condition:** Acceptable

## Interior of Freezer -

**Current Temperature Reading:** 35

**Freezer Walls - General Condition:**  
Acceptable

**Ice Maker in Freezer:** Yes

**Ice Maker - General Condition:** Yes

**Shelves and Door Racks - General Condition:** Acceptable

**Odor Detectable:** No

**Absorption type of Refrigerators (RV Style) require 12 to 24 hours to cool down. Unit should begin to indicate cooling function within 4 hours.**

## Inside Refrigerator Box -

**Current Temperature Reading:** 47

**Unit Been Running for 12 + Hours:** Yes

**Refrigerator Walls are in:**  
Acceptable

**Odor Detectable:** No

**Shelves and Door Racks - General Condition:** Acceptable

**Interior Light Works:** Yes

**Crisper Trays and Drawers - General Condition:** Acceptable

**Thermostat Sensor Control Mounted on Fins:**

**Control Sensor Type:**

## Backside of Refrigerator -

**Cooling Coils - General Condition:**

**Recall Kit Installed:** Not Required

- The right side refrigerator door appears to be difficult to close completely. Recommend qualified technician inspect.
- Refrigerator Temperature



- Freezer Temperature

# Motor Home Inspection Report



---

## Water Heater

**Brand:** Suburban

**Model #:** SW10DE

**Serial #:** 084103891

**Water Heater Type:** Tank Type

**All Available Heat Sources:** Gas & Electric

**Operates on All Available Heat Sources:** Yes

**Rubber Grommet Around Gas Line Sealed:** Yes

**Type of Ignition:** Direct Spark / Electronic

**Burner Assembly Area - General Condition:** Acceptable

**Leaks on Pressure Temperature Relief Valve:** Acceptable

- Water Heater



---

## Furnace

**Brand:** Suburban

**Model #:** SF30

**Serial #:** 084903025

**Furnace Operates:**

**Air Intake / Exhaust Area(s) - General Condition:** Acceptable

**Floor Vents Blocked/Covered:** No

**Dauber Screens Installed:** Yes

- Unable to verify operation of Furnace due to the inside temperature of the RV being over 90 degrees, which is the maximum a thermostat will go.

---

## Furnace

# Motor Home Inspection Report

**Brand:** Suburban

**Model #:** SF42

**Serial #:** 084204120

**Furnace Operates:**

**Air Intake / Exhaust Area(s) - General Condition:** Acceptable

**Floor Vents Blocked/Covered:** No

**Dauber Screens Installed:** Yes

- Unable to verify operation of Furnace due to the inside temperature of the RV being over 90 degrees, which is the maximum a thermostat will go.

---

## Cook Top - Oven

**Brand:** Atwood

**Model #:** CU33BP

**Serial #:** 5746301256491

**Stove Top - General Condition:** Acceptable

**All Burners Operate:** Yes

**Burner Grate - General Condition:**  
Acceptable

**Rubber Grommets for Stove Top Grate:** Yes

**Burner Ignition Source:** Auto - Piezo Ignition

**Burners All Light:** Yes

**Burner Flame Color - General Condition:**  
Acceptable

**\* Only Those Ovens that are Separate from Cook Top will have Different Model / Serial Numbers -**

**Brand:**

**Model #:**

**Serial #:**

**Oven Door - General Condition:**

**Oven Racks - General Condition:**

**Burner Ignition Source:**

**Oven Burner Lights:**

**Burner Flame Color - General Condition:**

---

## Microwave

**Brand:** Sharp

**Model #:** R1870F

**Serial #:** 454220

**Microwave - Convection Oven Type:**  
Microwave / Convection Oven

**Output Wattage Rating:** 850

**Convection Mode Fan Blower Come On:**  
Yes

**Temperature, Test Cup of Water for 60 Seconds:** 140

---

## Cook Top Exhaust Vent

**Part of Microwave:** Yes

**Exhaust Vent Installed:** No

**Exhaust Vent - General Condition:**  
Acceptable

**Operational:** Yes

**Fan Speeds - General Condition:**  
Acceptable

**Venting:** Vents to Exterior

---

## Air Conditioner #1

# Motor Home Inspection Report

**Brand:** Coleman Mack

**Model #:** 9024779

**Serial #:** 090813069

**Thermostatic Controls:** Dual with Furnace

**Air Conditioner - Heat Pump:** Heat Pump - Heat / Cool

**Delta T means a temperature difference between return air and cool output air.**

**Delta T # Degrees:** 10

**Filter - General Condition:** Acceptable

- The Front Air Conditioner does not appear to be producing cold air.



Supply temperature reading of 78 degrees



Return temperature is 88 degrees

---

## Air Conditioner #2

**Brand:** Coleman Mack

**Model #:** 9024779

**Serial #:** 090813068

**Thermostatic Controls:** Dual with Furnace

**Air Conditioner - Heat Pump:** Heat Pump - Heat / Cool

**Delta T means a temperature difference between return air and cool output air.**

**Delta T # Degrees:** 36

**Filter - General Condition:** Acceptable

- Middle AC unit.

---

## Air Conditioner #3

**Brand:** Coleman Mack

**Model #:** 9024779

**Serial #:** 090813072

**Thermostatic Controls:** Dual with Furnace

**Air Conditioner - Heat Pump:** Heat Pump - Heat / Cool

**Delta T means a temperature difference between return air and cool output air.**

**Delta T # Degrees:** 28

**Filter - General Condition:** Acceptable

- Rear AC unit.

---

## Washer/Dryer

# Motor Home Inspection Report

**Washer / Dryer Type:** Single Units

**Washer Installed:** Yes

**Operational:** Yes

**Signs of Leaks:** No

**Dryer Installed:** Yes

**Operational:** Yes

**Dryer Vent - General Condition:** Acceptable

- Stacked Washer and Dryer



---

## In House Vacuum System

**Brand:** Dirt Devil

**Model:** CV950

**Serial #:** unknown

**Operational:** Yes

**Attachment / Accessories - General Condition:** Acceptable

---

## Dishwasher

**Brand:** Fisher Payke

**Model:** DD24SCHTX7

**Serial #:** unknown

**Racks / Wash Bars - General Condition:**  
Acceptable

**Operational:**

**Completed Cycle:**

**Results of Operation:**

**Hoses / Connections - General Condition:** Acceptable

- Was unable to verify operation of the dishwasher and could not find the service manual to refer to.

---

## Ceiling Fan

**Operational:** Yes

**Blades / Motor - General Condition:** Yes

# Motor Home Inspection Report

**Direction / Fan Speed:** Some Features Work

- Ceiling Fan worked on low and high in one direction only.

## Section 11 - Interior Conditions and Appearance

### Ceiling

**Ceiling - General Condition:** Acceptable

**Verify the Following Items, Add Remark for any Unchecked Items -**

- |  |                              |  |                              |
|--|------------------------------|--|------------------------------|
| <b>Ceiling Panels Loose</b>                  | <input type="checkbox"/> Yes | <input checked="" type="checkbox"/> No |                              |
| <b>Ceiling Discoloration / Stains</b>        | <input type="checkbox"/> Yes | <input checked="" type="checkbox"/> No |                              |
| <b>Trim work - Ceiling Missing / Damaged</b> | <input type="checkbox"/> Yes | <input checked="" type="checkbox"/> No | <input type="checkbox"/> N/A |

### Ceiling Vents & Skylight(s) -

**Vents & Skylight(s) - General Condition:** Fair

- |  |   |                             |   |
|--|---|-----------------------------|---|
| <b>Thermostat Controls &amp; Switches Work</b> | <input checked="" type="checkbox"/> Yes | <input type="checkbox"/> No |   |
| <b>All 12 Volt DC Fans Operate</b>             | <input checked="" type="checkbox"/> Yes | <input type="checkbox"/> No | <input type="checkbox"/> N/A            |
| <b>All 120 Volt AC Fans Operate</b>            | <input type="checkbox"/> Yes            | <input type="checkbox"/> No | <input checked="" type="checkbox"/> N/A |

**Trim Ring Around Vents & Skylight(s) - General Condition:** Acceptable

- |   |                              |  |                              |
|---|------------------------------|--|------------------------------|
| <b>Stains Around Roof Vents / Skylight(s)</b> | <input type="checkbox"/> Yes | <input checked="" type="checkbox"/> No | <input type="checkbox"/> N/A |
|---|------------------------------|--|------------------------------|

- Ceiling Vent in kitchen area works but the thermocouple appears to not be secured and interfering with the fan operation.



### Light Fixtures - 12 Volt DC and 120 Volt AC

**Light / Fixture - General Condition:** Acceptable

**Verify the Following Items, Add Remark for any Unchecked Items -**

- |                                      |   |                             |                              |
|--------------------------------------|---|-----------------------------|------------------------------|
| <b>Wall Mounted Light Fixture(s)</b> | <input checked="" type="checkbox"/> Yes | <input type="checkbox"/> No | <input type="checkbox"/> N/A |
|--------------------------------------|---|-----------------------------|------------------------------|



## Motor Home Inspection Report

<b>Do all 12 Volt DC Lights Function</b>	<input checked="" type="checkbox"/> Yes	<input type="checkbox"/> No	<input type="checkbox"/> N/A
<b>Rope Lights</b>	<input type="checkbox"/> Yes	<input type="checkbox"/> No	<input checked="" type="checkbox"/> N/A
<b>Do all 120 Volt AC Lights Function</b>	<input type="checkbox"/> Yes	<input type="checkbox"/> No	<input checked="" type="checkbox"/> N/A
<b>Spot Lights</b>	<input checked="" type="checkbox"/> Yes	<input type="checkbox"/> No	<input type="checkbox"/> N/A
<b>Missing or Broken Lenses</b>	<input type="checkbox"/> Yes	<input checked="" type="checkbox"/> No	<input type="checkbox"/> N/A
<b>Floor Lights</b>	<input type="checkbox"/> Yes	<input checked="" type="checkbox"/> No	<input type="checkbox"/> N/A
<b>Missing Shades or Broken Cover</b>	<input type="checkbox"/> Yes	<input checked="" type="checkbox"/> No	<input type="checkbox"/> N/A
<b>Entry Lights - Inside RV</b>	<input checked="" type="checkbox"/> Yes	<input type="checkbox"/> No	<input type="checkbox"/> N/A

### Walls

**Walls - General Condition:** Acceptable

**Verify the Following Items, Add Remark for any Unchecked Items -**

<b>Wall Panels Loose</b>	<input type="checkbox"/> Yes	<input checked="" type="checkbox"/> No
<b>Water Damaged Wall Panels</b>	<input type="checkbox"/> Yes	<input checked="" type="checkbox"/> No
<b>Panels Discolored / Stained</b>	<input type="checkbox"/> Yes	<input checked="" type="checkbox"/> No
<b>Soft Spots in Walls</b>	<input type="checkbox"/> Yes	<input checked="" type="checkbox"/> No
<b>Trim Work on Walls</b>	<input checked="" type="checkbox"/> Yes	<input type="checkbox"/> No
<b>Damage Repairs Performed</b>	<input type="checkbox"/> Yes	<input checked="" type="checkbox"/> No
<b>Holes or Repair on Walls</b>	<input type="checkbox"/> Yes	<input checked="" type="checkbox"/> No

### Windows / Emergency Exit Windows

**Windows - General Condition:** Acceptable

**All Windows Operational:** Yes

**Emergency Exit Windows Installed:** Yes

**Emergency Exit Windows Operational:** Yes

- Emergency Window in living room area.



# Motor Home Inspection Report

## Flooring

Flooring - General Condition: Fair

Verify the Following Items, Add Remark for any Unchecked Items -

Sheet Vinyl	<input type="checkbox"/> Yes	<input checked="" type="checkbox"/> No
Floor Covering Discolored / Stained	<input type="checkbox"/> Yes	<input checked="" type="checkbox"/> No
Carpet	<input checked="" type="checkbox"/> Yes	<input type="checkbox"/> No
Water Damage	<input type="checkbox"/> Yes	<input checked="" type="checkbox"/> No
Ceramic Tile	<input checked="" type="checkbox"/> Yes	<input type="checkbox"/> No
Carpet Worn	<input type="checkbox"/> Yes	<input checked="" type="checkbox"/> No
Tile - Other	<input type="checkbox"/> Yes	<input checked="" type="checkbox"/> No
Sheet Vinyl Stained	<input type="checkbox"/> Yes	<input checked="" type="checkbox"/> No
Plank	<input type="checkbox"/> Yes	<input checked="" type="checkbox"/> No
Soft Spots in Floor	<input type="checkbox"/> Yes	<input checked="" type="checkbox"/> No
Floor Panels Loose	<input type="checkbox"/> Yes	<input checked="" type="checkbox"/> No
Previous Repairs Performed	<input type="checkbox"/> Yes	<input checked="" type="checkbox"/> No

- Cracked ceramic tile in front of the sofa, just behind passenger seat.



- Cracked tile in front of the dinette.

# Motor Home Inspection Report



## Cabinets

**Cabinets - General Condition:** Acceptable      **Type of Hinges:** Exposed

**Verify the Following Items, Add Remark for any Unchecked Items -**

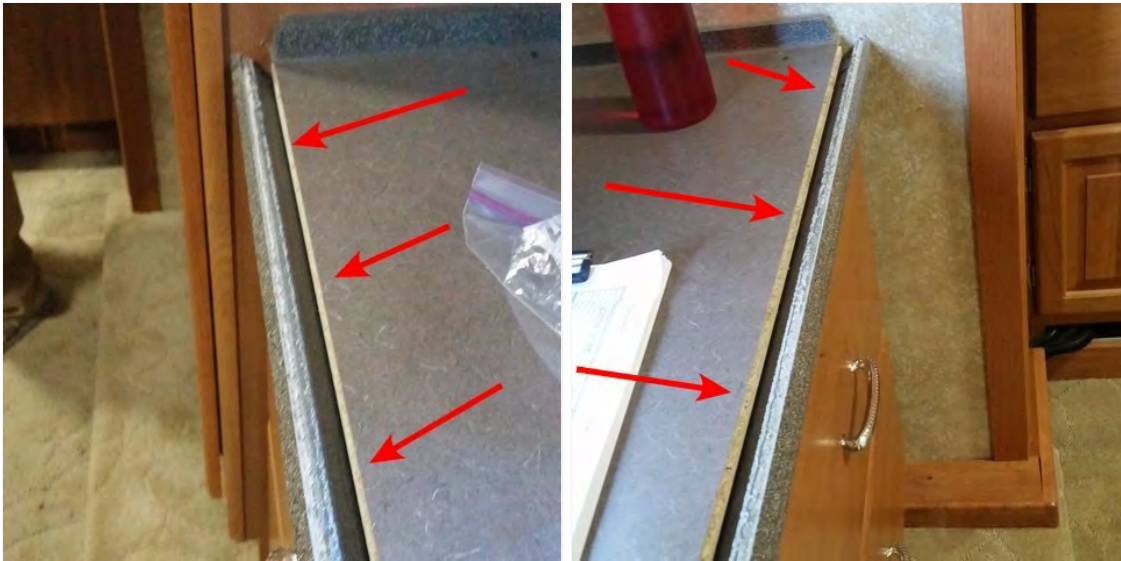
- |                                       |                              |  |
|---------------------------------------|------------------------------|--|
| <b>Door Damage / Scratches</b>        | <input type="checkbox"/> Yes | <input checked="" type="checkbox"/> No |
| <b>Counter Top Damage / Scratches</b> | <input type="checkbox"/> Yes | <input checked="" type="checkbox"/> No |
| <b>Wood Rot or Broken</b>             | <input type="checkbox"/> Yes | <input checked="" type="checkbox"/> No |
| <b>Drawer Damage / Scratches</b>      | <input type="checkbox"/> Yes | <input checked="" type="checkbox"/> No |

- Cabinet door located next to the refrigerator appeared to have a loose glass and has some tape on it.



# Motor Home Inspection Report

- The molding on the counter in the bedroom appears to be loose.



## Kitchen Sink / Faucet

**Kitchen Sink / Faucet - General**

**Sink Style:** Double Bowl

**Sink Type:** Stainless

**Condition:** Acceptable

**Verify the Following Items, Add Remark for any Unchecked Items -**

<b>Faucet Working</b>	<input checked="" type="checkbox"/> Yes	<input type="checkbox"/> No
<b>Faucet Leaks at Stem</b>	<input type="checkbox"/> Yes	<input checked="" type="checkbox"/> No
<b>Water Damage Under Sink</b>	<input type="checkbox"/> Yes	<input checked="" type="checkbox"/> No
<b>P Traps Hold Water</b>	<input checked="" type="checkbox"/> Yes	<input type="checkbox"/> No

## Toilet

**Verify the Following Items, Add Remark for any Unchecked Items -**

<b>Water Leaks</b>	<input type="checkbox"/> Yes	<input checked="" type="checkbox"/> No
<b>Indication of Previous Damage / Repair</b>	<input type="checkbox"/> Yes	<input checked="" type="checkbox"/> No
<b>Bowl Holds Water</b>	<input checked="" type="checkbox"/> Yes	<input type="checkbox"/> No
<b>Toilet Mounting Problems</b>	<input type="checkbox"/> Yes	<input checked="" type="checkbox"/> No

## Bathroom Sink / Faucet

**Bathroom Sink / Faucet - General**

**Sink Style:** Single Bowl

**Sink Type:** Other

**Condition:** Acceptable

# Motor Home Inspection Report

Verify the Following Items, Add Remark for any Unchecked Items -

Faucet Working	<input checked="" type="checkbox"/> Yes	<input type="checkbox"/> No
Faucet Leaks at Stem	<input type="checkbox"/> Yes	<input checked="" type="checkbox"/> No
Water Damage Under Sink	<input type="checkbox"/> Yes	<input checked="" type="checkbox"/> No
P Trap Holds Water	<input checked="" type="checkbox"/> Yes	<input type="checkbox"/> No
Sink(s) Holds Water	<input checked="" type="checkbox"/> Yes	<input type="checkbox"/> No
Hot and Cold Water Available	<input checked="" type="checkbox"/> Yes	<input type="checkbox"/> No

---

## Shower / Tub

Shower / Tub - General Condition: Acceptable

Shower / Tub Style: Shower stall

Verify the Following Items, Add Remark for any Unchecked Items -

Stains in Shower Stall / Tub	<input type="checkbox"/> Yes	<input checked="" type="checkbox"/> No	
Water Damage / Leaks	<input type="checkbox"/> Yes	<input checked="" type="checkbox"/> No	<input type="checkbox"/> N/A
Glass Doors	<input checked="" type="checkbox"/> Yes	<input type="checkbox"/> No	<input type="checkbox"/> N/A
Soap Dish in Place	<input checked="" type="checkbox"/> Yes	<input type="checkbox"/> No	<input type="checkbox"/> N/A
Shower Door Latch Functioning	<input checked="" type="checkbox"/> Yes	<input type="checkbox"/> No	<input type="checkbox"/> N/A
Towel Racks in Place	<input checked="" type="checkbox"/> Yes	<input type="checkbox"/> No	<input type="checkbox"/> N/A
Shower Curtain with Rod	<input type="checkbox"/> Yes	<input type="checkbox"/> No	<input checked="" type="checkbox"/> N/A

Shower Door / Frame / Seals - General Condition: Acceptable

---

## Bathroom Sink / Faucet

Bathroom Sink / Faucet - General Condition: Acceptable

Sink Style: Single Bowl

Sink Type: Other

Verify the Following Items, Add Remark for any Unchecked Items -

Faucet Working	<input checked="" type="checkbox"/> Yes	<input type="checkbox"/> No
Faucet Leaks at Stem	<input type="checkbox"/> Yes	<input checked="" type="checkbox"/> No
Water Damage Under Sink	<input type="checkbox"/> Yes	<input checked="" type="checkbox"/> No
P Trap Holds Water	<input checked="" type="checkbox"/> Yes	<input type="checkbox"/> No
Sink(s) Holds Water	<input checked="" type="checkbox"/> Yes	<input type="checkbox"/> No
Hot and Cold Water Available	<input checked="" type="checkbox"/> Yes	<input type="checkbox"/> No

---

## Section 12 - Furniture Condition

# Motor Home Inspection Report

## Chairs

Chairs - General Condition: Acceptable

Verify the Following Items, Add Remark for any Unchecked Items -

Fabric Tears / Separation	<input type="checkbox"/> Yes	<input checked="" type="checkbox"/> No
Signs of Excess Wear	<input type="checkbox"/> Yes	<input checked="" type="checkbox"/> No
Fabric Discolored / Stains	<input type="checkbox"/> Yes	<input checked="" type="checkbox"/> No
Water Damage	<input type="checkbox"/> Yes	<input checked="" type="checkbox"/> No

---

## Sofa

Sofa - General Condition: Acceptable

Verify the Following Items, Add Remark for any Unchecked Items -

Fabric Tears / Separation	<input type="checkbox"/> Yes	<input checked="" type="checkbox"/> No	<input type="checkbox"/> N/A
Signs of Excess Wear	<input type="checkbox"/> Yes	<input checked="" type="checkbox"/> No	<input type="checkbox"/> N/A
Fabric Discolored / Stains	<input type="checkbox"/> Yes	<input checked="" type="checkbox"/> No	<input type="checkbox"/> N/A
Water Damage	<input type="checkbox"/> Yes	<input checked="" type="checkbox"/> No	<input type="checkbox"/> N/A

---

## Sofa

Sofa - General Condition: Acceptable

Verify the Following Items, Add Remark for any Unchecked Items -

Fabric Tears / Separation	<input type="checkbox"/> Yes	<input checked="" type="checkbox"/> No	<input type="checkbox"/> N/A
Signs of Excess Wear	<input type="checkbox"/> Yes	<input checked="" type="checkbox"/> No	<input type="checkbox"/> N/A
Fabric Discolored / Stains	<input type="checkbox"/> Yes	<input checked="" type="checkbox"/> No	<input type="checkbox"/> N/A
Water Damage	<input type="checkbox"/> Yes	<input checked="" type="checkbox"/> No	<input type="checkbox"/> N/A

---

## Dinette/Table/Chairs

Dinette / Table / Chairs - General Condition: Acceptable

Verify the Following Items, Add Remark for any Unchecked Items -

Fabric Tears or Separation	<input type="checkbox"/> Yes	<input checked="" type="checkbox"/> No	<input type="checkbox"/> N/A
Signs of Excess Wear	<input type="checkbox"/> Yes	<input checked="" type="checkbox"/> No	<input type="checkbox"/> N/A
Fabric Discolored / Stains	<input type="checkbox"/> Yes	<input checked="" type="checkbox"/> No	<input type="checkbox"/> N/A
Water Damage	<input type="checkbox"/> Yes	<input checked="" type="checkbox"/> No	<input type="checkbox"/> N/A

# Motor Home Inspection Report

**Previous Repairs Performed**       Yes       No       N/A

---

## Beds

**Beds - General Condition:** Acceptable

**Verify the Following Items, Add Remark for any Unchecked Items -**

<b>Pillow Top Mattress</b>	<input type="checkbox"/> Yes	<input checked="" type="checkbox"/> No	<input type="checkbox"/> N/A
<b>Signs of Excess Wear</b>	<input type="checkbox"/> Yes	<input checked="" type="checkbox"/> No	<input type="checkbox"/> N/A
<b>Fabric Tears / Separation</b>	<input type="checkbox"/> Yes	<input checked="" type="checkbox"/> No	<input type="checkbox"/> N/A
<b>Bed Covers</b>	<input checked="" type="checkbox"/> Yes	<input type="checkbox"/> No	<input type="checkbox"/> N/A
<b>Fabric Discolored / Stains</b>	<input type="checkbox"/> Yes	<input checked="" type="checkbox"/> No	<input type="checkbox"/> N/A
<b>Bed Covers Match Décor</b>	<input checked="" type="checkbox"/> Yes	<input type="checkbox"/> No	<input type="checkbox"/> N/A

- The bed appears to be a dual control sleep number bed.



---

## Television #1

**Brand:** Panasonic

**Model:** TC32LX85

**Verify the Following Items, Add Remark for any Unchecked Items -**

<b>Works Properly</b>	<input type="checkbox"/> Yes	<input checked="" type="checkbox"/> No	<input type="checkbox"/> N/A
<b>Properly Mounted / Secured</b>	<input checked="" type="checkbox"/> Yes	<input type="checkbox"/> No	<input type="checkbox"/> N/A
<b>Clean and Maintained</b>	<input checked="" type="checkbox"/> Yes	<input type="checkbox"/> No	<input type="checkbox"/> N/A

- Unable to verify operation of the Front TV by the door. Due to this, unable to verify DVD operated properly even though it did power up.

---

## Television #2

**Brand:** Panasonic

**Model:** TC32LX85

# Motor Home Inspection Report

Verify the Following Items, Add Remark for any Unchecked Items -

- Works Properly  Yes  No
- Properly Mounted / Secured  Yes  No
- Clean and Maintained  Yes  No

---

## Television #3

Brand: Panasonic Model: TC26L85

Verify the Following Items, Add Remark for any Unchecked Items -

- Works Properly  Yes  No
- Properly Mounted / Secured  Yes  No
- Clean and Maintained  Yes  No

---

## Television #3

Brand: Panasonic Model: TC32LX85N

Verify the Following Items, Add Remark for any Unchecked Items -

- Works Properly  Yes  No
- Properly Mounted / Secured  Yes  No
- Clean and Maintained  Yes  No

---

## Ray / DVD

Blu Ray Brand: Model:

DVD Brand: Sony Model: SCPT650

Verify the Following Items, Add Remark for any Unchecked Items -

- Works Properly  Yes  No  N/A
- Properly Mounted / Secured  Yes  No  N/A
- Clean and Maintained  Yes  No  N/A

---

## TV Antenna / Satellite / Radio

TV Antenna Installed: Yes Satellite Antenna Installed: Yes Radio Antenna Installed: Yes

Verify the Following Items, Add Remark for any Unchecked Items -

- Clean and Maintained  Yes  No  N/A



## Motor Home Inspection Report

**Good Handle / Crank**

Yes

No

N/A

**Antenna Moves Up and Down**

Yes

No

N/A

---